



Chris Cox BA (Hons) MA MIfA

Director

[www.airphotoservices.co.uk](http://www.airphotoservices.co.uk)

[info@airphotoservices.co.uk](mailto:info@airphotoservices.co.uk)

Brinkworth House

Business Centre

Brinkworth Wiltshire SN15 5DF

+44 (0)1666 511646

+44 (0)7827 810361

## PROFILE

[Chris Cox is a professional archaeologist, specialist interpreter of aerial imagery and expert witness](#)

Chris established Air Photo Services in Cambridge, UK in 1990 with Rog Palmer and has since worked on major infrastructure, legal expert witness and commercial development projects throughout the UK and Europe. She has over 28 years of experience as an interpreter of aerial imagery in the planning, heritage and engineering sectors and experience in provision of professional development training, recruitment and mentoring of graduate level staff.

Chris is a Council member and National Vocational Qualification (NVQ level 3) assessor for the Institute for Archaeologists (IfA), a member of the Society of Expert Witnesses (SEW) and the Aerial Archaeology Research Group (AARG).

## SKILLS

- [Legal expert witness opinion](#)
- [Representation in Court and at Inquiry](#)
- [Air Photo, satellite and LiDAR Interpretation](#)
- [Teaching and training at undergraduate, graduate and professional development levels](#)
- [Integration of API data with GIS](#)
- [Ortho-rectification and accurate mapping from aerial images](#)
- [Heritage consultancy, project design and management](#)

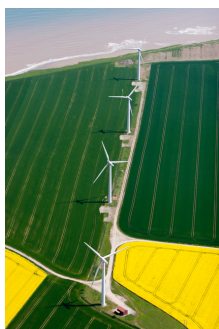
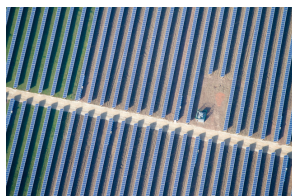
## QUALIFICATIONS

BA (Hons.) University of Liverpool 1983. Archaeology of the Eastern Mediterranean

MA University of Sheffield 1984.

Air Photo Interpretation. Taught individually by Dr D N Riley. Awarded the Robert Kiln Bursary for aerial reconnaissance.

## EXAMPLE PROJECTS



[Ash Lodge Drive, Ash and Tongham, Surrey, Expert witness services and representation at Public Inquiry regarding a Village Green Issue.](#)

Bewley Homes Plc Stereoscopic interpretation of authenticated aerial photographs to establish historic land use on The Site and successfully defend a TVG application. Expert witness report, liaison with Counsel and presentation of evidence in chief.

[Speen WTW DO Replacement Water Pipeline, Berkshire.](#)

Optimise Ltd. Interpretation, mapping and reporting from aerial photographs on buried heritage assets for environmental assessment over the route of a water pipeline, for Optimise Ltd.

[Heritage Environment Record update 2010 – 2012 from Digital Aerial Imagery.](#)

Hertfordshire County Council. Interpretation of digital False Colour Infra Red (FCIR) aerial imagery and input of results to HBSMR online database. For Hertfordshire County Council Environment Department, Heritage Environment Record, UK.

[Mill Lane, Walton-on-the-Naze, Essex. Expert witness services and written representation at Public Inquiry.](#)

Silverbrook Estates Ltd. Expert witness report to document the level of access over the site to successfully defend a Village Green application.

[Vixen Tor, Devon. Expert witness services and representation at Public Inquiry regarding a Rights Of Way Issue on behalf of the landowner.](#)

Mrs Mary Alford. Stereoscopic interpretation of authenticated aerial photographs to successfully refute a Right of Way claim over the site by The Ramblers using a 60 year time span of dated aerial photographs.

[Ashton Vale, Bristol. Expert witness services for refutation of Town Green application.](#)

Bristol City Football Club (BCFC) Ltd. Stereoscopic interpretation of authenticated aerial photographs to determine the land use to support a planning application for a new football stadium and defend a TVG application..

[Woodlands Solar Farm, Calcott, Kent.](#)

Lightsource Renewable Energy Ltd. Assessment of aerial photographs, mapping and report to inform heritage mitigation strategy.

[Triton Knoll Offshore Windfarm: Onshore substation options.](#)

RPS Planning And Development. Assessment of aerial photographs, mapping and report to inform heritage mitigation strategy.

